



Corporation

QUALITY TEXTILE PRODUCTS

Home Office and Plant
Five West Main Street, Chicopee, Mass. 01020
(413) 594-6661

**Reed's
Heating & Air Cond.**

154 Grove St.
Chicopee, MA 01020

Tel. (413) 592-6090

Mr. George Reed Jr.
Owner



Pioneer Valley
CONVENTION AND VISITORS BUREAU

Susanne Carrion
Director of Sales

56 Dwight Street
Springfield, MA 01103

(413) 787-1548



*How Can
We Help
You?*

• Since 1845



CHICOPEE SAVINGS

594-6692

70 Center Street • Fairfield Mall • 569 East Street

the free world's largest aircraft

C-5 Galaxy

In February 1985, U.S. Rep. Edward P. Boland, D-Springfield, announced an Air Force proposal to base the giant C-5A Galaxy at Westover AFB.

After more than two years of careful study, Westover officials announced last month that 16 of the four-jet transports would be based in Chicopee beginning in October.

Nearly \$50 million will be spent here to alter Westover facilities to accommodate more than \$1 billion in aircraft.

Westover will be increasing Air Force Reserve strength by 1,000 members, hiring more than three hundred more full time employees and increasing annual the base payroll by another \$14 million a year.

Once the C-5As are operational here, Westover will be putting about \$100,000 a day directly into the local economy. Purchases and indirect expenditures are expected to add another \$100,000 a day during the first three years of preparation.

Westover AFB construction projects will also generate about 800 labor-years of direct employment and 700 to 800 labor-years of indirect jobs in the community.

The C-5 has been operating from Westover's two-mile long runway since 1971. Aircraft stationed elsewhere in the country have used Westover as a stopping point for intercontinental missions.

The C-5 Galaxy is the largest aircraft in the inventory of the free world's air forces, and is a giant in more than just size.

Designed during the early days of the Vietnam War when American supply ships sat idle off ports like Cam Ranh Bay and Da Nang which were overwhelmed with cargo, the first C-5 took to the air a month after the Tet Offensive ended.

The C-5 can carry out-sized equipment, and dense cargo -- like tanks -- which had never been air transportable until the Galaxy. The C-5 has a cargo compartment 121 feet long, one foot shorter than Orville Wright's first flight at Kittyhawk in 1903.

The aircraft has an overall length of 247.8 feet, and a wing span of 222.7 feet. The tail

is 65 feet off the ground, taller than a six-story building. The crew sits about 45 feet above the runway.

The C-5 Galaxy is so large that the paint for the camouflage design alone weighs more than a ton.

The large nose, known as "the visor," opens and the rear ramp opens -- allowing speedy roll-on, roll-off capability for trucks, tanks, cannon and palletized cargo.

At take off with a maximum load of 240,000 pounds aboard, the C-5 weighs 769,000 pounds, and can hold up to 49,000 gallons of fuel for intercontinental flights. With that full load, the aircraft can cruise 3,250 miles at 520 miles per hour. With no load, the aircraft can cruise 6,940 miles at 555 miles per hour.

There are six crew members on the C-5, and the plane can carry as many as 343 passengers in three compartments.

The C-5 is powered by four General Electric turbo fan jet engines, each delivering 38,000 pounds of thrust at takeoff. When at full power for takeoff, each engine gulps 42 tons of air a minute through the eight-foot diameter engine air scoops.

Inside, besides being long, the cargo compartment is wide and spacious. The compartment could accommodate six Peter Pan buses, 48 full-size Cadillacs, a 105-bed mobile hospital, or 25,844,746 ping pong balls.

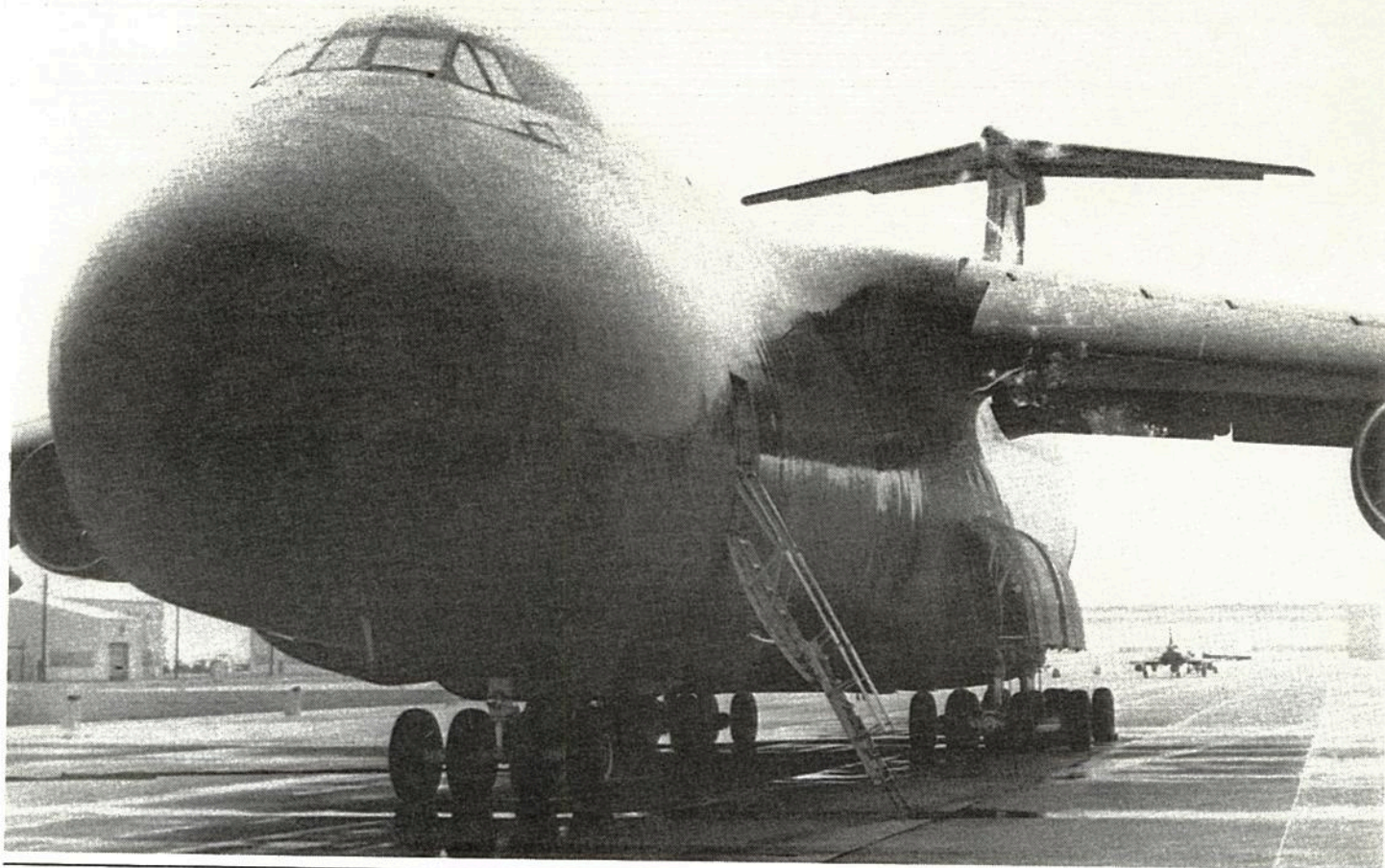
The C-5 does need room to operate, the takeoff roll with a full load is 8,400 feet, and the landing distance is 3,675 feet.

Westover's main runway is 11,600 feet long and 300 feet wide, making Chicopee an ideal location as a major C-5 base.

The C-5 Galaxy was officially accepted by the Air Force in 1969. Its size, volume, versatility, and performance combine to make the Galaxy the Air Force's most efficient cargo transport.

When the Blizzard of 1978 struck New England, the C-5 was used to haul large snow removal equipment to dig out Boston. Earlier this year, a C-5 was used to transport a

Continued on Page 24



WILLIAM C. FLANAGAN
 MARY E. BOLAND
 JOHN J. EGAN
 THEODORE C. BROWN

JAMES F. EGAN
 (1896-1986)

EDWARD T. COLLINS
 OF COUNSEL

LAW OFFICES OF

EGAN, FLANAGAN AND EGAN, P. C.

69 MARKET STREET

SPRINGFIELD, MASSACHUSETTS 01103-1607

TELEPHONE (413) 737-0260

CHICOPEE OFFICE
 154 GROVE STREET
 CHICOPEE, MASS. 01020
 1-413-594-2741

LONGMEADOW OFFICE:
 136 DWIGHT ROAD
 LONGMEADOW, MASS. 01106
 1-413-567-0324

J. DAVID KEANEY
 DANIEL J. SWORDS
 MAURICE M. CAHILLANE
 EDWARD J. McDONOUGH, JR.
 GARY B. LIQUORI
 ROBERTA L. BRUNDRETT
 JOHN M. PAYNE, JR.
 MARY C. SWORDS**
 JESSICA B. YOUNG**
 CATHERINE H. ADAMS**
 JOHN J. BOWE
 BART W. HEEMSKERK*

CHICOPEE OFFICE*
 LONGMEADOW OFFICE**

Continued from Page 22

large arson investigation van to Puerto Rico for use in solving a major hotel fire in San Juan.

The C-5 was designed, of course, to protect Americans in wartime. The C-5 can deliver virtually anywhere in the world completely equipped combat units, support forces, and all types of supplies, including large and heavy weapons and military vehicles never before airlifted, making it one of the most valuable tools of the Military Airlift Command.

The Air Force has 77 C-5As in its inventory and another 50 C-5Bs have been ordered. As the B models are purchased, updated A models are being transferred to the Air Force Reserve and the Air National Guard.

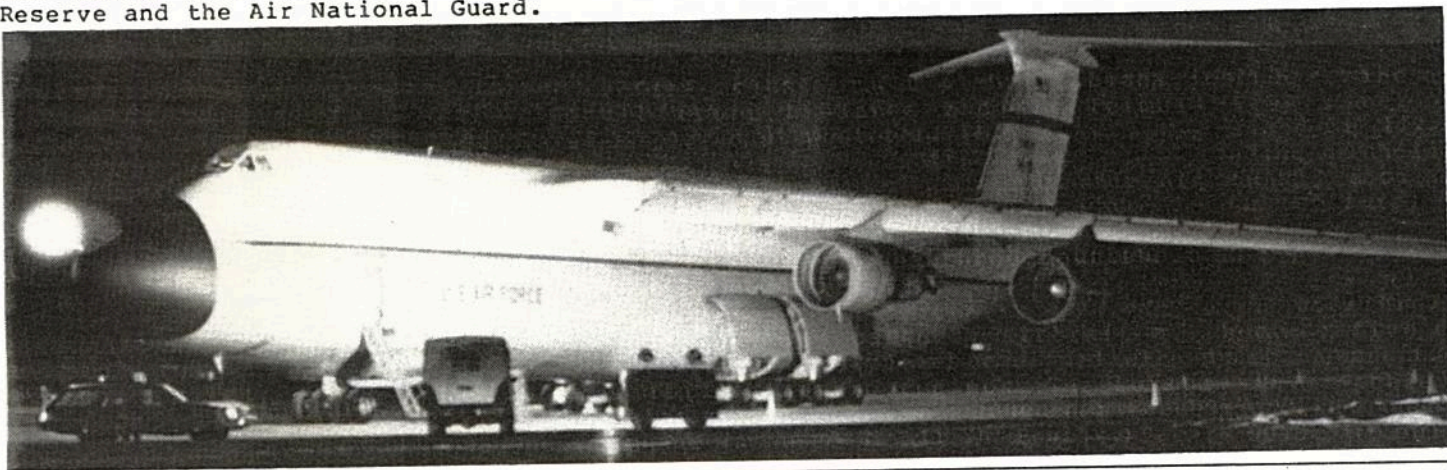
C-5 TRIVIA

A C-5 Galaxy can carry:

- 25,844,746 ping pong balls
- 100 Volkswagen Beetles or 48 Cadillacs
- enough fuel for the family car to make 31 trips around the world or 130 trips between New York and Los Angeles
- 3,934 bushels of wheat
- 7,833 bushels of unshelled peanuts
- 158,631,184 shelled peanuts
- 277,263 12 oz. cans of Budweiser
- 76,216 fifths of Jameson

The C-5 Galaxy has:

- five miles of control cables
- 103 miles of wiring
- four miles of tubing
- a price tag of more than \$108 million



Charter Peter Pan

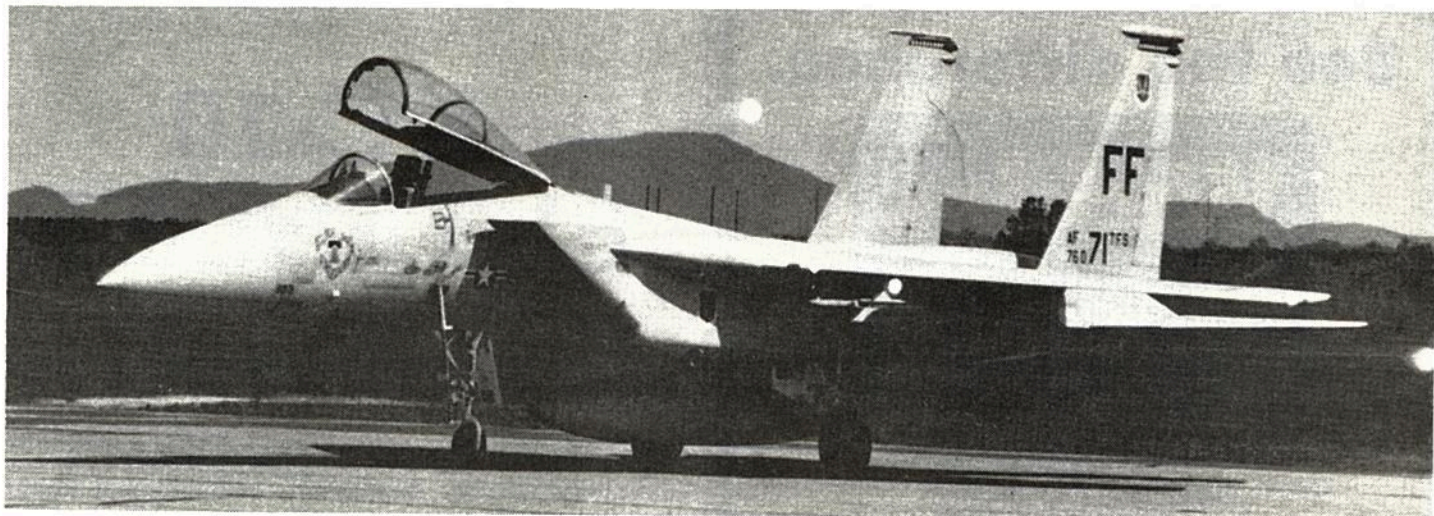
The People Professionals

Peter Pan offers escorted tour and charter services to destinations all across the USA and Canada, with the finest fleet of motorcoaches on the road today.

Peter Pan Bus Lines, Inc.

Contact: Charter Dept.
1776 Main Street, P.O. Box 1776
Springfield, MA 01102-1776
Tel. (413) 781-2900
MA Toll Free 1-800-332-8995
Outside MA Toll Free 1-800-628-8468





F-15 Eagle

The F-15 Eagle is an all-weather, extremely maneuverable, tactical fighter aircraft designed to gain and maintain air superiority in aerial combat.

The F-15 has electronic systems and weaponry to detect, acquire, track and attack enemy aircraft while operating in friendly or enemy airspace.

The weapons and flight control systems are designed so one man can safely and effectively perform air-to-air combat. The Eagle is the first operational aircraft with engine thrust exceeding the weight of the aircraft -- which means the F-15 can accelerate while climbing straight up.

The multi-mission avionics system sets the F-15 apart from other fighter aircraft. This system includes a head-up display which projects all essential information from the dashboard onto the windscreen at eye level. This allows the pilot to engage in combat and still be aware of the weapons indicators and aircraft functions without having to look down at the instruments.

The F-15 is equipped with pulse-Doppler radar which enables the pilot to look up at high-flying targets and look down at low-flying targets without having the radar confused by ground clutter.

The radar feeds information into the central computer for efficient weapons delivery.

The first flight of an F-15 was in July, 1972, and the first delivery to an operational unit was in November 1974.

The aircraft is equipped with two jet engines, each delivering 25,000 pounds of thrust, and can reach speeds of Mach 2.5 plus.

The combat ceiling is 65,000 feet, and the Eagle has a range of 3,450 miles.

The maximum takeoff weight is 68,000 pounds including full armaments. The aircraft is armed with one M-61A1 multibarrel gun, and four air to air missiles.

The tremendous power of the engines has enabled the F-15 to hold six of the eight time-to-height records.

The fastest climb to altitude ever recorded by a non-rocket powered aircraft was set in 1975 by an F-15 when the aircraft went from the ground to 65,516 feet in 2.94 minutes.

With the power available and relatively large wing surface, the F-15 is one of the fastest and most maneuverable aircraft in the world today.

CHINESE & AMERICAN FOOD CATERING TO PARTIES FOR ALL OCCASIONS

Orders to Take Out/Open 11:30 a.m.
Friday & Sat. Till 3:00 A.M. to 2:30 a.m.

Superb Eating IN AN UNUSUAL ATMOSPHERE

ENTERTAINMENT
POLYNESIAN FLOOR SHOW
LUNCHEON SPECIAL
ALL YOU CAN EAT
BUFFET



HUKE LAU

RESTAURANT
COCKTAIL LOUNGE

705 MEMORIAL DRIVE
CHICOPEE FALLS

FOR RESERVATIONS Call **593-5222**

See the difference.

**Wickles
FinePrint**

**OFFSET PRINTING
PHOTOCOPIES**

Business Cards and Stationery
Resumes * Announcements * Flyers
Posters * Tickets * Newsletters
Business Forms * Invoices * Brochures

AMHERST 1 Boltwood Walk **256-0148**

CHICOPEE CTR. 17 Center St. **592-9283**

CHICOPEE 1400 Memorial Dr. **536-0606**

HOLYOKE 370 High Street **533-7268**

NORTHAMPTON 151 Main Street **586-9982**

SPRINGFIELD Wilbraham Road **783-0294**

WESTFIELD 30 Main Street **568-1901**

**UNIVEL
PLASTICS CORPORATION**

A major plastics supplier
to the aerospace industry,
servicing customers such
as the U. S. Air Force, PWA,
Hamilton Standard, and
Sikorsky Divisions of United
Technologies, NASA, General
Electric, RCA, and IBM.

165 Front Street
Chicopee, MA 01013
413-592-4791

Accepting the challenge for 21 years

KC-10 EXTENDER

The KC-10A Extender is a tanker/cargo aircraft with receiver refueling capability.

Along with the ability to refuel fighters and bombers, the KC-10 can refuel a C-5 -- giving a Galaxy transport loaded with nearly a quarter million pounds of cargo a range limited only by the endurance of the flight crews living on board.

The C-5A Galaxy and KC-10A Extender team would allow Air Force Reserve crews from Westover to fly directly from Chicopee to any point in the world.

The KC-10 is a modified McDonnell Douglas DC-10. All non-essential systems and airline type equipment was removed from the aircraft and mission systems were added.

The Extender has two large fuel tanks under the cargo floor, and aerial refueling boom, hose and drogue, seated aerial refueling operator station, aerial refueling receptacle and military avionics.

The wing tanks of the DC-10 were supplemented in the KC-10 by two additional fuselage tanks, one under the forward lower cargo compartment and on under the rear compartment.

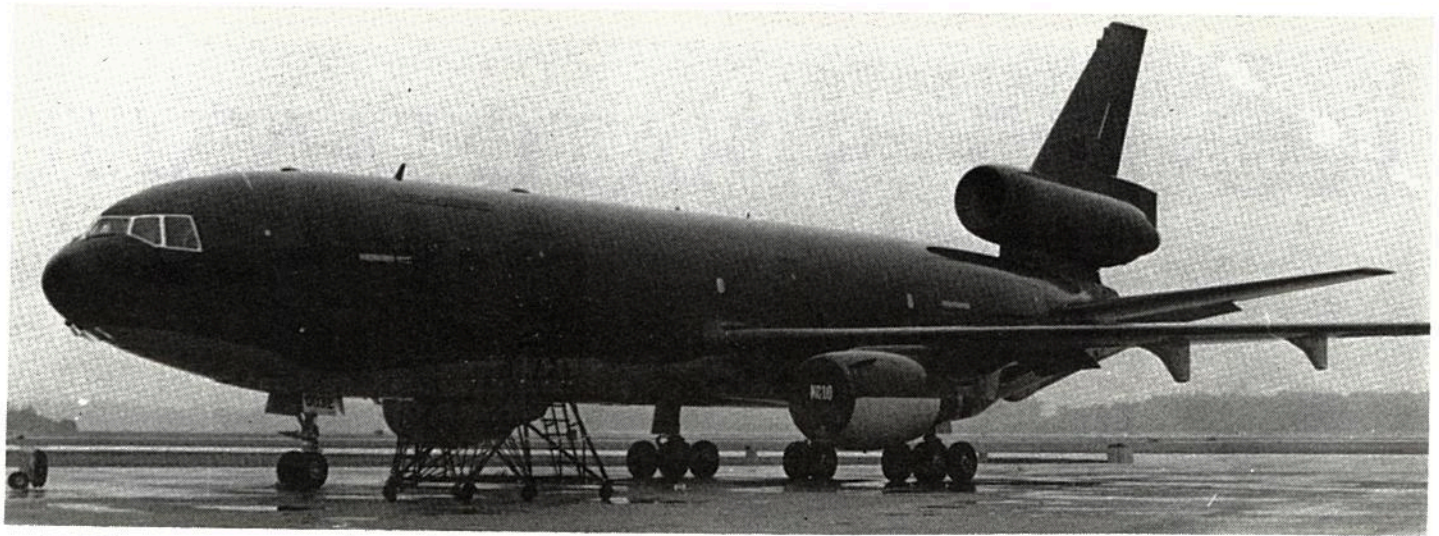
Combined, the six fuel tanks can carry more than 342,000 pounds of fuel -- almost twice as much as the KC-135 Stratotankers which were stationed at Westover AFB in the 1960s and early 1970s.

The fuel tanks of the KC-10 are installed for safety with rubber fuel bladders, fuel lines located away from the bottom of tanks, and special structural arrangements under the tanks give protection against the hazards of collapsing fuselage-mounted landing gear, wheels-up landings or other dangers.

Because the KC-10 is equipped with both types of aerial refueling systems -- the boom and the hose and drogue systems -- the Extender can refuel a variety of aircraft flown by the U.S. military and those of allied nations.

The Extender boom is 10 feet longer than the refueling boom on the KC-135, and of larger diameter. The KC-10 has an improved flow nozzle and can transfer up to 1,200 gallons a minute -- or 20 gallons, about the capacity of a mid- to full-sized automobile, each second.

Fuel transfer is directed from the aerial



refueling operator compartment, which has seated stations for the boom operator and two others. Seated stations were designed because the prone position used in the KC-135 was less comfortable and caused operator fatigue.

Hand controls for aerial refueling equipment are located at the operator's arm rest. A window, supplemented by a periscope, is installed for rear viewing. Sideview mirrors also allow observation of formation areas off the KC-10's wing tips.

Special equipment and lighting enables the KC-10 to refuel aircraft at night.

In addition to the Extender's primary mission of refueling aircraft, the KC-10 can carry cargo loads ranging from 27 standard pallets weighing up to 170,000 pounds or a mixture of people and cargo up to 75 support personnel and 17 pallets.

Flown by a crew of four, the Extender has an unrefueled range of 4,373 miles with 170,000 pounds of cargo. The KC-10 can reach 42,000 feet and an air speed of 528 miles per hour.

The aircraft has a wingspan of 165.3 feet, is 181.6 feet long and the tail is 58 feet tall.

BayBank[®]

Laflamme
OIL CO INC



865 MONTGOMERY STREET
CHICOPEE, MA 01013
TEL. 538-8196

Richard J. Laflamme



**Community
Medical
Center**

260 New Ludlow Road
Chicopee, MA 01020

Walk - Ins Welcome

**We Are Here
When You Need Us
365 Days**

Monday - Saturday 9:00 a.m. to 8:00 p.m.
Sunday & Major Holidays Noon to 5:00 p.m.

533-3926

KC-135 STRATOTANKER



The KC-135 Stratotanker was developed from the basic design of a Boeing 707 passenger plane. The first of 732 models of the C-135 was delivered to the Air Force in 1957.

Stratotankers were developed to replace the KC-97s, propeller driven tankers stationed at Westover AFB in the 1950s. As Air Force aircraft evolved into faster and more sophisticated fighters, bombers and cargo planes, the slow speed of the KC-97 caused the newer jets to slow to dangerous near-stall speeds.

The KC-135 cruises at 530 miles per hour.

Stratotankers stationed at Westover AFB from 1957 to 1974 were powered by noisy turbojet engines. Loaded to capacity with fuel for Westover's B-52s, the KC-135As were nearly as loud as the heavily loaded bombers which roared over Western Massachusetts.

Newer KC-135 models flown by the Air Force Reserve and Air National Guard have turbofan Pratt & Whitney engines which are quieter and more fuel efficient. The KC-135E can offload 20 percent more fuel than the A model.

Flown by a crew of four, Stratotankers have a ceiling of 50,000 feet and a range of 1,150 miles with 120,000 pounds of fuel. Without a capacity fuel load, the range is 9,200 miles.

The KC-135 has a wing span of 130.9 feet, is 136.3 feet long, and the tail reaches 41.6 feet above the runway.



Boom of a KC-135E reaches toward a B-52

WESTOVER AIR SHOW '87

BENEFACTORS

Arclair Builders, P.O. Box 584, Chicopee, MA
Bulkley, Richardson & Gelinas, 1500 Main Street, Springfield, MA
Burke Beverage, Inc., 1125 Sheridan Street, Chicopee, MA
Irema USA Limited, P.O. Box 859, Chicopee, MA
Atty. Joseph E. Kusiak, 327 East Street, Chicopee, MA
Monsanto Company, 730 Worcester Street, Indian Orchard, MA
Sonoco Products Company, 1000 Sheridan Street, Chicopee, MA

SPONSORS

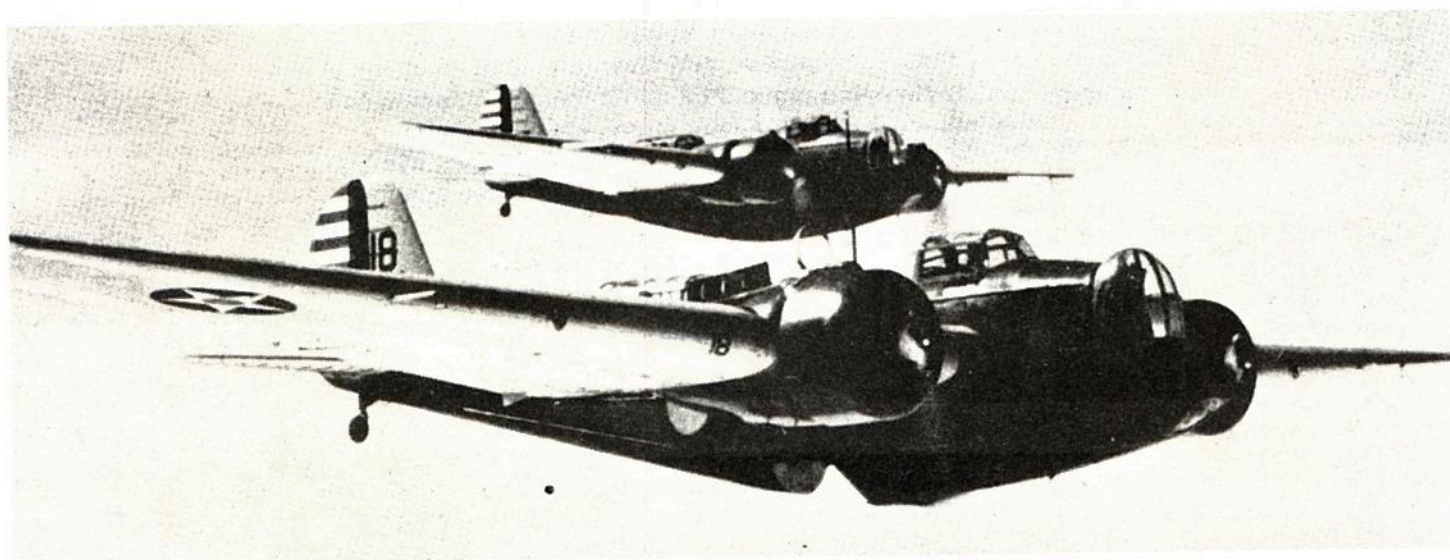
AMVETS Post #12, 754 Montgomery Street, Chicopee, MA
Arnold's Meats, 307 Grattan Street, Chicopee, MA
Bourdeau Real Estate, 206 East Street, Chicopee, MA
Brunelle Funeral Home, Inc., 811 Chicopee Street, Chicopee, MA
Desmarais Oil Co., Inc., 63 Worthington Street, Chicopee, MA
Jack Rigali's Italian Village Restaurant, 1405 Memorial Drive, Chicopee, MA
Laporte, Shea & Borys Insurance, 71 Church Street, Chicopee, MA
My Brother's Place, 185 Grove Street, Chicopee, MA
The Pond-Ekberg Co., Inc., 660 Broadway, Chicopee, MA
Whittaker Corporation, MA Ind. Prk/Fuller Road, Chicopee, MA

DONORS

A. J. Stanley Real Estate, 26 Montgomery Street, Chicopee, MA
B. J.'s Cycle Service, 191 East Street, Chicopee, MA
Bridal Corner, 591 James Street, Chicopee, MA
Chicopee Animal Clinic, Inc., 37 Montgomery Street, Chicopee, MA
Chicopee Blue Print Co., 101 R Front Street, Chicopee, MA
Chicopee Engineering Associates, Inc., 1247 East Main Street, Chicopee, MA
Cook Motor Sales, Inc., 760 Front Street, Chicopee, MA
Dr. Richard Dzialo, 711 James Street, Chicopee, MA
John's Pizzeria, 424 Front Street, Chicopee, MA
Just Fun of Fairfield, Inc., 591 Memorial Drive, Chicopee, MA
King's Drug Store, 29 Grove Street, Chicopee, MA
Le Fleurist, 482 Britton Street, Chicopee, MA
Ludlow Savings Bank, 591 James Street, Chicopee, MA
Modern Beauty Shoppe, 48 Center Street, Chicopee, MA
P.J. Brault Insurance Agency, Inc., 94 Pine Street, Chicopee, MA
Poly-Plating, Inc., 4610 Westover Road, Chicopee, MA
Potter Insurance Agency, Inc., 99 Church Street, Chicopee, MA
Transcript-Telegram, 120 Whiting Farms Road, Holyoke, MA
Western Massachusetts Aviation & Military Collectors Assoc., P.O. Box 181, Chicopee, MA
Westover Shops & Motel, 591 James Street, Chicopee, MA
Westover Supermarket, 1782 Westover Road, Chicopee, MA
Zayre Department Store, 1451 Memorial Drive, Chicopee, MA



EARLY VIEWS OF WESTOVER FIELD



THE FIRST AIRCRAFT TO LAND AT WESTOVER FIELD WAS A MARTIN B-10 BOMBER





WESTOVER AIR FORCE BASE TODAY

Compliments of


BANK OF NEW ENGLAND®
WEST



OPEN 7 DAYS A WEEK 11 AM TIL 11 PM
FRI., & SAT., TIL MIDNIGHT

R. FRATTESI, PROP.

Giovanni's
PIZZA SHOPS

1885 Memorial Drive
L'il Peach Plaza
Fairview

1810 Wilbraham Road
16 Acres
Springfield

536-1057

783-6153

PIZZA • GRINDERS • SPAGHETTI
FISH & CHIPS

DINE IN OR TAKE OUT



ANY
MEDIUM, LARGE
OR FAMILY PIZZA
with this coupon

Valid Thru June 30, 1987

OPEN 7 DAYS

SOFT SERVE
NOW AT BOTH
LOCATIONS!



Molto Delizioso
from

Giovanni's







U.S. AIR FORCE THUNDERBIRDS



GARBRIELE D. KORMANNSHAUS
President

*All Seasons Travel
Agency, Inc.*

574 EAST STREET
CHICOPEE, MA 01020

OFFICE: (413) 594-4741



TELEPHONE
598-8381

STEPHEN E. BYS

EDWARDS INSURANCE AGENCY, INC.
10 CENTER STREET
CHICOPEE, MASSACHUSETTS 01013



Kathryn Banas
Store Manager

McDonald's of Chicopee II
777 Meadow Street
Chicopee, Massachusetts 01020

413/592-5345

**aldenville
credit
union** 

710 Grattan Street, Chicopee

Where everyone belongs...
for all their financial needs.

You Invest in Us. We Invest in You.

And we're all investing in the future.

At SIS we're proud of our commitment to the communities we serve in Western Massachusetts, and we work hard to live up to it.

To us, that means taking our assets and reinvesting them in the region, helping it to continue to grow and prosper.

But that's only part of the picture. We also invest our support in community organizations and events, not just in Springfield, but throughout the region.

And we invest our personnel by encouraging them to become actively involved in the cities and towns that make up the Greater Springfield area.

So when we're involved in a fine arts program, a first class sporting event or a fun-filled neighborhood festival, we feel it's a worthwhile investment of our time, capital and resources.

And a way to give you a good return on your investment in us.



**Springfield Institution
for Savings**
The most bank for your money.



24 HR.
TOWING

• AUTO BODY • INSURANCE ESTIMATES
TOWING & RAMP TRUCK SERVICE

58 West Street
Chicopee, Mass. 01013

592-6511



44 Hampden Street
Springfield
Massachusetts
01103
413 781-2801

**JIM LEWIS
GENERAL MANAGER**

AIR FORCE RESERVE

A GREAT WAY TO SERVE



SOON TO BECOME
THE 439TH MILITARY AIRLIFT WING
WITH THE ARRIVAL OF C-5A GALAXIES

IF YOU HAVE PRIOR MILITARY SERVICE

Service with another military branch may be transferrable to the expanding Air Force Reserve needs at Westover AFB.

With the recent authorization to increase our strength by another thousand members, the various units operating one weekend a month and two weeks during the year at Westover may have openings for which you qualify.

In the Air Force Reserve you will have many travel and service-related benefits. You will capitalize on your prior service and earn points toward retirement at age 60.

IF YOU ARE JUST GRADUATING FROM SCHOOL

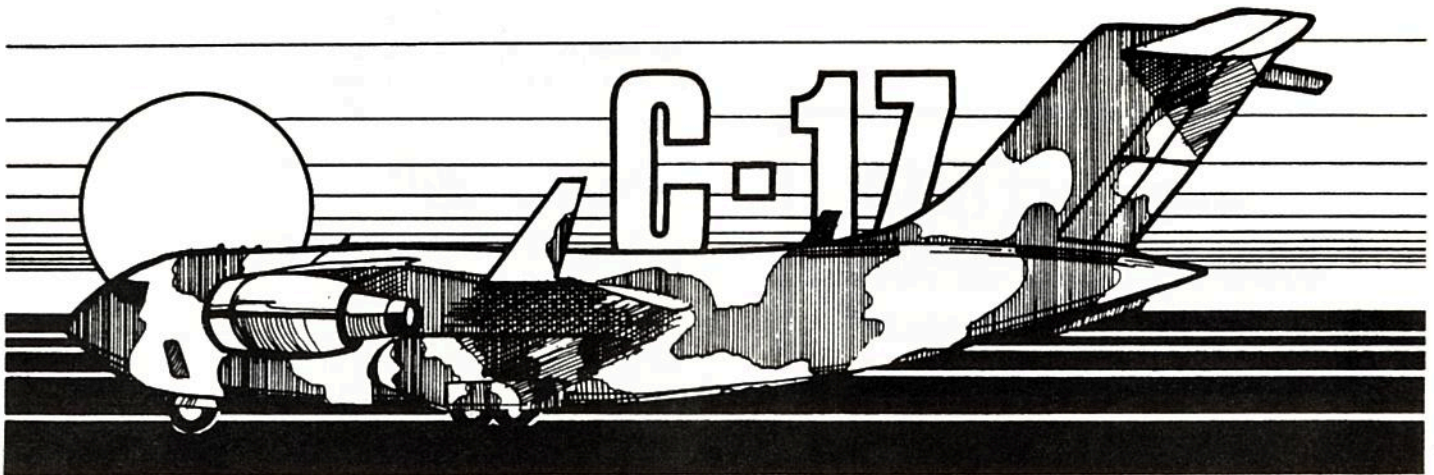
Recent high school and college graduates can join the Air Force Reserve instead of the active duty services. After the equivalent of a half semester for basic training, you can enter advanced training and learn a high-paying skill.

Upon completion of training -- and many courses carry college credit -- you will return home and serve as an Air Force Reserve member at Westover AFB.

The payback for your Air Force skill training will be an obligation to come to Westover AFB and train one weekend a month and two weeks a year with your unit.



CALL TOLL FREE 1-800-257-1212



The highly maneuverable C-17 will be able to takeoff and land on short fields, back up on the ground and remain stable even at reduced flight speeds.

Headquarters Military Airlift Command,

EVERYONE'S FAVORITE CONVENTION CENTER IN WESTERN MASSACHUSETTS

Excellent Food ★ Superb Service
★ Immaculate Rooms ★

*A Permanent Staff Who Knows
What YOU Want*

*Call Our Sales Office For
Exciting Details!*



Quality Inn® & CONFERENCE CENTER

1-291 and Mass. Turnpike - Exit 6
296 Burnett Road, Chicopee, MA 01020

Telephone 413-592-7751

DOMINIC S. SANTANGELO

SAFE & SOUND INC.

CAR AND HOME STEREO SPECIALISTS

(413) 594-4407
428 EAST STREET

(413) 594-6460
CHICOPEE, MA 01020

ASSOCIATED TYPOGRAPHERS, Inc.

Spencer Stamp Service, Inc.



P.O. BOX 3214
399 LIBERTY ST.
SPRINGFIELD, MASS. 01101

413 - 781-1021



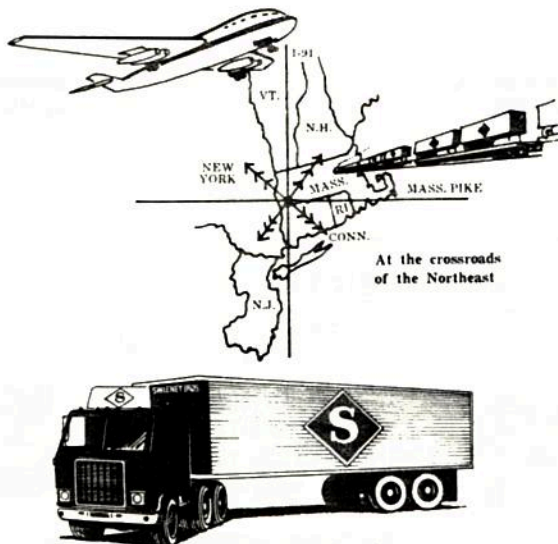
Signature Stamps • Kwik Stamps • Embossers • Notary Seals • Daters
Photopolymer Printing Plates • Special Stamps • Inks • Self-Inkers
Photographic and Metal Typography



RCA Service Company | Government Services
 Westover Job Corps Center
 WAFB | Johnson Drive | Chicopee, MA 01022 | Tel (413) 593-5731
R J Robinson Center Director



SWEENEY BROS. INC. TRANSPORTATION AND DISTRIBUTION CENTER



4050 Westover Road
 Chicopee, MA 01020
 (413) 593-5933
 Mass. Watts 1-800-322-0416



The C-130Es will soon be leaving Westover, but the heritage they leave behind is a proud tradition of service to our nation by citizen airmen who live right here in New England.

Many people are surprised to learn that this huge airbase is operated by their friends and neighbors instead of active duty Air Force members.

Last year, the number of Air Force people assigned to Westover AFB was eight.

Westover AFB has a civilian work force of about 600 people. There are also another 200 employees known as ARTs -- Air Reserve Technicians -- who are members of the Air Force Reserve and work full time at Westover.

About 2,000 Air Force Reservists are members of units based at Westover. There are also about 1,000 Army, Navy and Marine reservists assigned to units based at Westover AFB. Among the other units, only 99 people were from the active duty services.

This year marks the 350th anniversary of the Massachusetts Militia. In the spring of 1637, men from the Massachusetts Bay Colony formally banded together to protect their settlements.

There are men and women at Westover today who are descended from members of the Massachusetts Militia and continue to serve their nation on a part time basis. Service to their neighbors and the commonwealth is in some cases a family tradition; for others, part-time military service is a partial pay-back for the benefits of being an American.

Back in 1637, the men who gathered at the first Massachusetts Militia muster were not soldiers; they were farmers, tradesmen, merchants and servants.

Few people realize that by 1775, Massachusetts had 16,500 trained men under arms in its well-organized 138-year-old militia.

Some historians maintain the Massachusetts Militia made the concept of the American Revolution feasible. Twice during the French Indian Wars the "weekend soldiers" of the militia defeated professional French troops. By the mid-18th Century, some colonists believed the expertise of the Massachusetts Militia was good enough to defeat professional British soldiers and English mercenaries. Concord Bridge, Bunker Hill and Saratoga proved the part-time "Yankee" militia units and companies of Minutemen could defeat regiments of England's professional standing army.

As we celebrate the 200th anniversary of the U.S. Constitution, the cycle is coming full circle and the nation is increasingly looking toward part-time Reserve and National Guard forces to protect America.

The 350-year-old tradition of part-time military service -- and the new emphasis on the importance of America's reserve forces -- is clearly seen at Westover AFB.

About a third of Westover reservists come from Hampden and Hampshire Counties. Another third are from other cities and towns in Massachusetts. The final third come from throughout New England and New York.

When the last of Westover's sixteen C-130Es zooms over this historic 47-year-old airfield for a final salute, the spirit of service to neighbor and nation will remain behind.

And, when the first intercontinental C-5A Galaxy glides in to its new home on the two-plus-mile main runway on the old tobacco fields of Chicopee, the men and women of Westover's units will continue the tradition.

We will miss the C-130s and our navigators -- the C-5A's sophisticated avionics make navigators unnecessary -- but the history of Westover AFB has been one of evolution and looking to the future.

When Westover celebrates its golden anniversary in 1990 this base will look much different that it does today. The nose-docks beyond the display area will be razed and camouflaged C-5As will be parked wingtip to wingtip for more than a half-mile.

New buildings will be constructed and taxiways will be built. One hangar will be so large that a 223-foot wide C-5A with its 65-foot tall tail can be towed in one door and out the other side.

And there will be new jobs for the communities surrounding Westover. The new mission will bring 334 more full time jobs to Chicopee and open up positions for a thousand more Air Force Reservists.



THE PARTYKA COMPANIES

J.F. PARTYKA & SON, INC.

**HOLYOKE SANITARY
LAND FILL, INC.**

**HOLYOKE ENERGY
RECOVERY CO. (H.E.R.C.O.)**

**CONNECTICUT VALLEY SANITARY
WASTE DISPOSAL, INC.**

AMES PRIVILEGE

**RESOURCE MANAGEMENT
AND RECOVERY**

**Post Office Box 248
Chicopee, MA 01014
413/592-6784**



People.
Our Most Important Ingredient.™



All that's missing is you.

- Earn Extra Money
- Set Your Hours ● Free Uniforms
- Meal Benefits ● Job Variety.

**1460 Memorial Drive
Chicopee, MA 01020**

Now Hiring.

Always, An Equal Opportunity/Affirmative Action Employer.

PERRY'S AUTO PARTS

& EQUIP. CO. INC.

- FOR. & DOM. PARTS • PAINT & BODY
- PERFORMANCE SUPPLIES
- MACHINE SHOP • RACK & PINION
- CV JOINTS • F.W.D. • R.W.D. • 4x4 SHAFTS

365 CHICOPEE ST., CHICOPEE, MA

WAYNE PARE'

DITZLER



AUTOMOTIVE
FINISHES

536-0310

UNITED BUSINESS MACHINES, INC.

559 EAST STREET CHICOPEE FALLS, MA 01020

(413) 592-4757

ROYAL SALES & SERVICE CALCULATOR REPAIR
EXPERT IBM, OLYMPIA, ADLER TYPEWRITER REPAIR

Specializing in Steel Fabricating

Heavy Equipment Repairing

CHICOPEE WELDING & TOOL INC.

GERARD R. LEMOINE

Heliarc & Automatic Welding
Brass - Aluminum - Cast Iron
All Types Steel

40 Haynes Circle
Chicopee, Mass.
Tel. 413-598-8215

PEOPLES BANK

Since 1885—it's People that keep you coming back.

High Street • Highland • Elmwood • Fairview Phone 538-9500
Hampshire Mall Phone 586-6606

Granfield & Ritchott Insurance Agency, Inc.

COMPLETE INSURANCE SERVICE

HOME • AUTO • LIFE • BUSINESS

William Masse

Jim Bugbee

35 Center Street
Chicopee, Massachusetts 01013

Phone: 592-1367



THE THUNDERBIRDS

Continued from Page 7

and mementos presented by foreign and American leaders.

The squadron also was proclaimed the first official Bicentennial organization in the Air Force in 1976, and was the only flying unit so recognized.

People Number One

All the plaques, awards and records of performances seen to overlook the most important ingredient -- PEOPLE. It's not just the men and women in the squadron, but those people who greet the squadron with elaborate ceremonies; people smiling up at squadron members from hospital beds during goodwill visits; people waiting through hours of scorching heat, on freezing flightlines, or as at Westover AFB last year on rain drenched concrete and mud hoping to watch a demonstration.

For squadron members, the daily activities of toting suitcases, pressing uniforms, inspecting aircraft, polishing boots, and the hundreds of other behind-the-scene tasks which must be done -- week after week, year after year -- can become routine.

However, while many of the tasks they perform become routine, the Thunderbirds guarantee there will never be a routine Thunderbirds air demonstration. And this year at Westover the Thunderbirds have created a lengthy performance.

This year, two of the Thunderbird pilots are from Connecticut -- Capt. Herbert J. Nelson of West Hartford, the team narrator, and Capt. Dave Robinson of Fairfield, the left wing pilot.

Capt. Bert Nelson

Nelson enlisted in the Air Force in October 1972 and became a crew chief on an FB-111. He left active duty in 1974 to complete his college degree at the University of Connecticut.

As a Yukon student seeking a bachelor of science in finance, Nelson enrolled in Air Force ROTC and was named the unit's distinguished graduate in 1978.

Returning to the Air Force, he went through pilot training at Vance AFB in Oklahoma and in 1980 was assigned as a T-38 instructor pilot there and later at Randolph AFB in Texas.

While in Texas he earned a masters in management from Webster University. Then he underwent fighter training at Holloman AFB, N.M., and was selected the distinguished graduate of his flying class. He was trained on F-4s in 1985 at Homestead AFB in Florida.

Prior to his selection for the Thunderbirds, Nelson served as an F-4E pilot at Osan Air Base in Korea.

The 32-year-old pilot has logged more than 2,000 hours flying jet aircraft.

Capt. Dave Robinson

Born in Woonsocket, R.I., but calling Fairfield, Conn., his home, Robinson is in his first year with the Thunderbirds.

The 32-year-old pilot flies the number two aircraft as left wing pilot in the diamond formation.

Robinson attended pilot training at Vance AFB, Okla., where he was named outstanding graduate and was the recipient of the Air Training Command Commander's Trophy. He earned outstanding graduate honors at T-38 instructor pilot training at Randolph AFB, Texas, and returned to Vance AFB as a T-38 instructor pilot and flight examiner.

He trained on the F-15 at Luke AFB, Ariz., where he was an outstanding graduate in 1981. Assigned to the 59th Tactical Fighter Squadron, Eglin AFB, Fla., Robinson and also served as the wing executive officer for the 33rd Tactical Fighter Wing. He returned to Luke AFB in 1983 as an instructor pilot with the 426th Tactical Fighter Training Squadron prior to his selection for the Thunderbirds.

Robinson has logged more than 2,500 hours flying high performance jet aircraft during his Air Force career.



BECOME A WESTOVER ACE



BECOME A WESTOVER ACE

The Arts have angels and patrons, but Westover Visitor Center seeks Aces to aid our museum with contributions of cash and historical memorabilia.

Westover Visitor Center needs Norden bombsights, flying jackets, patches, airplanes, photographs, books, films, goggles, display cases and money.

Dust off your military aviation memorabilia and peek into your wallet. If you can help us launch the Westover Visitor Center, we'll make you an Ace.

As one of Westover's Aces, you'll receive our Westover AFB Visitor Center patch, a handsome certificate identifying your efforts, and an identification card which will someday * entitle you to discounts at the museum.

* We want to turn **someday** into **some day** soon.



CONTACT:

CHICOPEE CHAMBER OF COMMERCE

93 CHURCH ST. CHICOPEE, MA 01020 413-594-2101