

Social case work services include counseling for individual and family problems; reporting and communications; financial assistance in emergencies and referral to specialized agencies; personal and incidental services. All patients, and their families are eligible for Red Cross service. The social worker is available for consultation with patients, and their visitors during regular office hours 0800 to 1700, and after regular office hours, she may be reached through the base operator.

Credit Union

The Westover Federal Credit Union has provided financial assistance to all Westover personnel since 1943. It is located in building 6600 at the corner of Pendleton Avenue and Industrial Road, base telephone ext. 2918 or 3998, and is open Monday through Friday from 0900 to 1500 hours.

Share deposit accounts earn 5% per annum which is compounded semi-annually. Share life insurance is provided at no cost to the members; in case of death or total disability an amount equal to the share balance, but not exceeding \$2,000.00, is added to the member's share account. Neither FDIC nor FSLIC deposit insurance is provided.

Over \$24,000,000.00 has been loaned to credit union members. Signature loans of \$750.00 and secured loans of \$10,000.00 are authorized. Automobiles, mobile homes, real estate, boats, trailers, shares, bank accounts and co-makers are accepted as collateral. Members with an established credit may be given a line of credit up to \$750.00 and thereby eliminating repetitive loan requests. Regardless of age, a QUICK loan of \$50.00 is authorized for members newly assigned to the base.

Loan protection life insurance is provided at no cost to the members. Automobiles may be taken to any country of the free world. Class E allotments are encouraged. Members may purchase money orders at 10 cents each. In addition, the following services are provided without charge to members: (1) check cashing, (2) notary, (3) NADA automobile prices, (4) financial counseling, and (5) brochures to resort areas.



Banking Facilities

A local bank branch office is located adjacent to the Base Library in the main exchange parking area in Bldg. 2607. Hours of operation are 0900 to 1500 hours daily except Saturday and Sunday. Paydays, 0900-1700 hours.

Legal Assistance

Legal assistance for all personnel requiring aid in such matters as wills, leases, debts, contracts, tax problems and other matters may be obtained by visiting the Staff Judge Advocate's Office in Bldg. 1208.

Consultation on legal matters, by appointment, is conducted Tuesdays, Wednesdays and Thursdays from 1330-1600 hours. Bona fide emergencies require no appointment. Notarial services are also available.

Personal Affairs

The serviceman's personal affairs should be kept in current status.

New arrivals may obtain information concerning their personal affairs status by contacting the personal affairs section located in Hangar 5.

Assistance in such matters as dependents benefits, allotments, insurance and other information is available to those requiring it.

MARS Station

A Military Affiliate Radio System (MARS) station is maintained at this base and is staffed by trained personnel. Officially a military amateur radio station, the MARS system, is also a means of aiding military personnel and their families in making direct contact while at some distant location, without cost.

Messages may be sent from, and for, Westover personnel during normal duty hours, through the United States and most territorial possessions.

Post Office

A branch of the Chicopee Falls Post Office is located in Bldg. 1201 near base headquarters. Money orders and registry window is open 0830 to 1630 hours weekdays. The stamp window is open from 0815 to 1630 hours weekdays. The post office is closed on Saturday, Sunday and holidays. Zip code for Westover AFB is 01022.

Base Reenlistment

Open during normal duty hours, 0745 to 1700 Monday through Friday, the Base Reenlistment Section is located in Hangar 5. When required, reenlistments are also made on Saturday or Sunday.

Base Newspaper

The Yankee Flyer is the unofficial base newspaper. Deadline for news copy is 1630, Monday. The paper is distributed each Friday morning. The newspaper office is located in Bldg. 1300, phone extension 3309.

Thrift Shop

Operated on a volunteer basis by Officer and NCO Wives as a service for military and civilian personnel on base, the shop carries articles from clothing, household goods and furnishings, to any type of personal equipment.

Personnel wishing to sell articles may utilize this facility by setting a price on the article to which 10 per cent service charge is added by the Thrift Shop.

It is located in Bldg. S-111 near the Base Theater and is open Monday through Friday from 0930-1230. Phone 2924.



Clothing Sales Store

The Clothing Sales Store located in Bldg. 6502 at the intersection of Anderson Road and Pendleton Ave. is fully stocked to provide uniform clothing items to male and female military personnel.

WESTOVER Auto Regulations

Hot-rodders, drag racers and showoffs are taboo at Westover. Nowhere will the words "drive safely" be heard more than here. Safe driving is considered an obligation, on or off base, and every effort is made to enforce traffic regulations.

Registration

Automobile registration is rather simple, providing a few proper technicalities have been taken care of. Registration will be made at the Air Police Registration and Identification Section within 48 hours, or two normal duty days after arrival on base. The facility is located in Hangar 5.

Airmen First Class and below are required to have a letter of counselling from their respective squadron commanders prior to operating a vehicle on Westover.

The requirement for obtaining a Westover Auto Decal are: operator's license; auto insurance policy with a minimum of personal liability of \$5,000/\$10,000 and property damage liability in the minimum amount of \$1,000, and valid safety inspection sticker from any state.

Personnel are advised to contact the Staff Judge Advocate when in doubt of the legality of their registration, license and insurance documents. A synopsis of the Massachusetts Motor Vehicle Laws and Regulations is available at the Staff Judge Advocate, Bldg. T-104 adjacent to the theater. It is strongly advised that every automobile operator on Westover AFB secure a copy.

Reporting Changes

Changes in registration, ownership, plate numbers, insurance (cancellation or renewal) will be made known to the Air Police registration and identification section within 48 hours. Failure to comply may result in suspension of on-base driving privileges.

Each person stationed at Westover must read and become familiar with Base Supplement 1 to Air Force Regulation 125-4, which covers in detail the rules governing the operation of privately-owned motor vehicles at this base. The military member is responsible for his dependents and will insure that they are familiar with this regulation.

Motor Vehicle Laws

All personnel who own or operate an automobile at Westover are encouraged to familiarize themselves with the motor vehicle laws and regulations of the Commonwealth of Massachusetts. Civil law enforcement agencies are constantly on the alert against improper registration of motor vehicles, operating without a driver's license, operating an unregistered vehicle or operating without liability insurance.

Speed Limits

The speed limit on base is 25 MPH on all roads except where otherwise posted. Extreme caution should be exercised while driving within the family housing areas and children's play areas. When approaching a school bus, regardless of direction of motion, all motorists will come to a complete stop and proceed only after the bus resumes motion and all passengers are clear of traffic.

Auto Accidents On Base

In the event an automobile accident occurs on base, the Air Police desk sergeant should be notified immediately at Ext. 3000. The automobile should not be moved unless an emergency exists.

In the event of accidents off base, strict compliance to Massachusetts vehicle laws is advised and military personnel involved will notify their respective first sergeants.

Seat Belts

Car owners are urged to procure and use seat belts. Insist that your passengers use them too.

Every car must have a base decal.

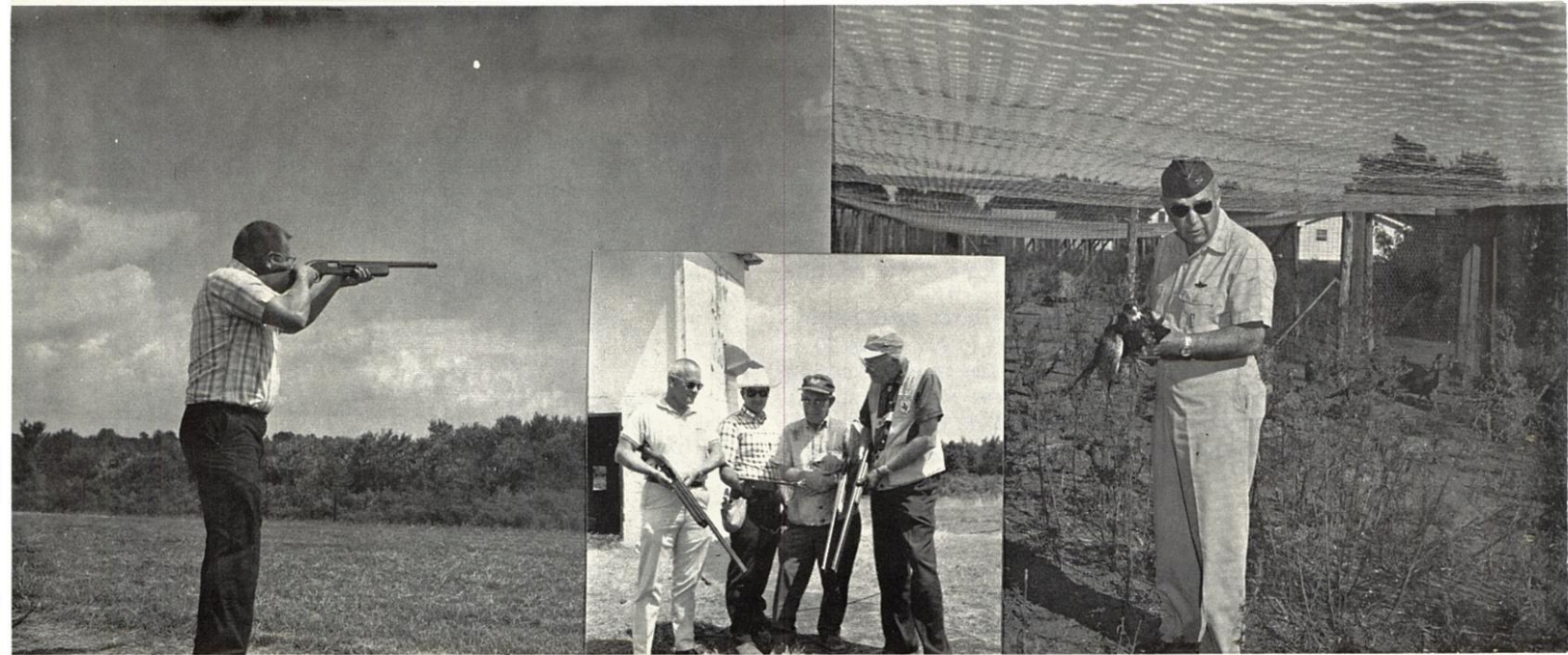


Motor Vehicle Registration



25 MPH on all roads unless otherwise posted.





Recreation . . .

Sports

Westover's athletic program has a range of sports vast enough to satisfy every enthusiast, whether he be fan or participant. These include both indoor and outdoor events.

Squadron intramural sports at Westover include touch football, basketball, volleyball, softball and golf in season. Most recently to come on the scene is boxing.

Base teams made up of squadron intramural members in basketball, softball, soccer, tennis, volleyball, ping pong, baseball and golf vie with other Air Force bases and represent Westover in tournament play, SAC-wide.

A well-equipped gymnasium accommodates both competitive and non-competitive activities. Here personnel have access to physical conditioning equipment, judo, and steam bath. The gymnasium is located in Bldg. P-634.

Although intramural competition dominates many evenings in the gymnasium, much free time is still available. Free time varies with the season, and various other scheduled events.



Outdoor recreation includes Westover's 18-hole golf course.



Fun for the family at the Hobby Shop.

Golf Course

All personnel and their families are invited to use the 18-hole golf course during the seasonal months. Professional instruction is offered to all personnel and families by the base's topnotch golf pros.

Bowling

Alleys are available for both league and open bowling in the bowling center. Hours of operation are Mondays through Friday, 1130 to 2300; Saturday, 0800 to 2300 and Sunday 1100 to 2300.

Swimming Pool

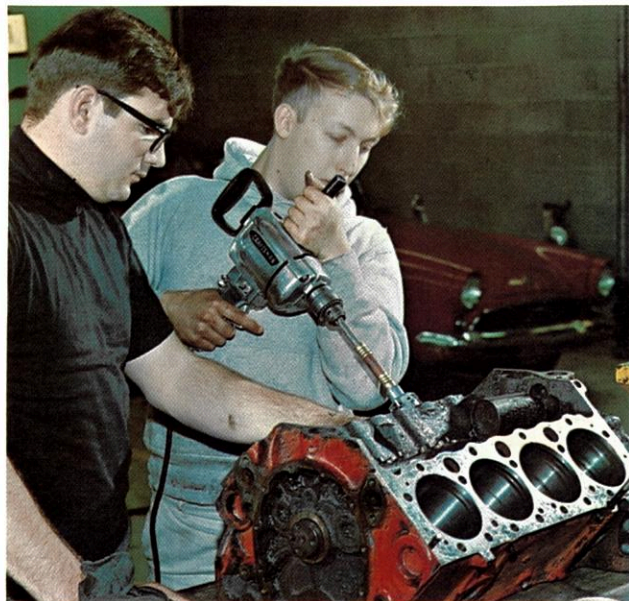
Swimming is a favorite summer sport at Westover. The base pool is open during the summer months. Qualified lifeguards are always present to make for safe as well as pleasant swimming. Special hours are reserved for dependents' use of the pool.

Hobby Shop

Those who find fun in doing it themselves when it comes to repairing their automobile or just making things with wood will find our Hobby Shops one of the finest and up to date in the Air Force.

Westover Auto Hobby Shop offers personnel the use of grease racks, one in-door and four out-door wash racks, engine build-up equipment, machines for testing automotive parts, and an up to date well stocked tool crib. We have 12 stalls plus one welding room. Located on Anderson Drive, Bldg. 6650, Telephone 2516. Hours of operation: Monday—closed, Tuesday through Friday—1400 to 2200 hours, Saturday—0900 to 1700 hours, Sunday 1300 to 1700 hours.

Westover Wood Hobby Shop is complete with every hand and power tool and saws needed for any kind of a job complete with a skilled supervisor for your service. Located on Anderson Drive, Bldg. 6650, Telephone 2516. Hours of operation: Monday—closed, Tuesday through Friday, 1700 to 2200 hours, Saturday—0900 to 1700, Sunday—1300 to 1700 hours.



Auto repairs being made at the Hobby Center

SAC Aero Club

Operating from on base, the Westover SAC Aero Club has a small fleet of aircraft.

Expert instructions are given in flying, navigation, maintenance, radio procedures, and other phases of light aircraft flying. Instruction leads to the acquisition of private licenses of varying degrees up to and including commercial license. Instruction is given by club personnel and civilian instructors.

The club office is located in Bldg. 1712, next to 99th Bomb Wing Headquarters, Hangar Avenue. Anyone interested in obtaining further details of this organization may contact club officials at 593-3183.

Rod and Gun Club

Outdoor types will find much to their liking as a member of the Rod and Gun Club. Membership is open to all military personnel assigned or attached to Westover.

Recreation includes hunting, deep sea and fresh water fishing, skeet shoots, pistol shooting, and outdoor barbecues.

Youth Center

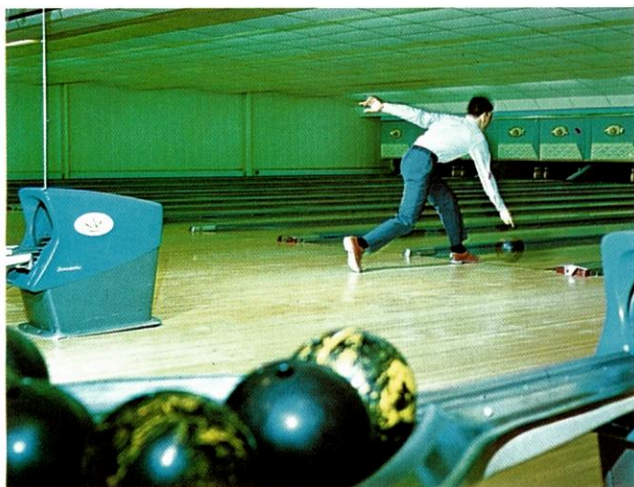
The dependent youth activities program on Westover provides an active and varied program in such activities as arts and crafts, seasonal sports, and social groups for youngsters ranging from 7 to 19 years of age.

Located in Building S-5000 near the Fairview Gate, the John F. Rand Memorial Youth Center includes a spacious club house, a pool and other table games. A snack bar is also available.

As part of the youth activities, the club organizes and supervises Little League baseball, football, basketball and other seasonal sport activities, such as swimming, tennis, skiing, bowling and judo.

The two most active groups are the Senior & Junior Teen Clubs. They are self-supporting units and plan the programs. Other activities include special parties, dancing, charity drives, etc.

Also sponsored by the center are the Explorers, Boy and Girl Scouts, Cub Scouts and Brownies. The groups hold their meetings at the base school.



Westover's newest 16 lane modern bowling center



The Aero Club newest aircraft

Base Exchange Facilities

Snack Bars

Eighth Air Force Headquarters snack bar is located in building 5640, extension 3046. The hours of operation are 0830-1600 Monday through Friday.

There is another branch located in the Base Supply Building, building 5375. The hours of operation are 0900-1615 Monday through Friday.

The Golf Course Snack Bar is open only from May through October. The hours of operation are 0700-2000 Monday through Friday and 0600-2000 on weekends.

The Youth Center Snack Bar is located in Building 5000. Hours of operation are from 1500-1730 Tuesday through Saturday and 1900-2230 on Friday night. This snack bar is closed Sunday and Monday.

Beauty Shop

The Beauty Shop is located in building 2301 and is open from 0900-1800 Monday through Thursday, 0900-2000 Friday and 0900-1430 on Saturdays. Appointments may be made by calling extension 2916.

Barber Shops

There are four Barber Shops located on the Base offering complete barber service. Appointments may be made by calling the listed extensions. The main barber shop is located in building 2323, extension 2241. The hours of operation Monday through Friday are from 0830 to 1730. On Saturday the barber shop is open from 0830 to 1300.

The Eighth Air Force headquarters barber shop is located in building 5639, extension 3458. The hours of operation are 0800-1700 Monday through Friday. It is closed on Saturday and Sunday.

The Hospital Barber Shop is located in the main hospital, building 5700, and is open from 0830-1700 Monday through Friday.

Stony Brook Barber Shop is located in the Mess Hall Building at Stony Brook and is open from 0900-1700 Monday through Friday.

Cleaners

There are two laundry and dry cleaning plants on base. The Exchange Cleaners is located in building 2314, directly behind the Main Exchange store. Hours of operation are from 0900-1730 Monday through Friday and 0900-1400 Saturdays. Another Exchange Cleaners is located in building 5670 next to Eighth Air Force Headquarters. Hours of operation are from 0900-1730 Monday through Friday.

Main Exchange

There are seven retail stores in Westover. The Main Exchange is located in Building 2313, extension 2139. The hours of operation are 1030-1730, Monday through Friday. The store is open on Saturday from 0930 to 1430.

The Housewares Annex, Town & Country Store, and Toyland, in season, are divisions of the Main Exchange and are located in the same area. Operating hours conform to the Main Exchange.

The Snack Shop, a service store located in Building

2603, extension 2228, is open daily from 1000 to 2100. Food necessities, drugs, cigarettes and party snacks are stocked for the convenience of Westover personnel.

The Beverage Shop is located on Hangar Avenue in Building 1603, extension 3837, and is open from 1000 to 2100 daily.

The Hospital Exchange is located on the basement floor of the hospital, Building 5700, extension 7393. The hours of operation are 0900-1700, Monday through Friday.

Eighth Air Force headquarters has a branch located in Building 5640, extension 3046. It is open from 0830-1630, Monday through Friday. Another branch is located in Base Operations, Building 7090, extension 2540, and the hours of operation are 0800-1700, Monday through Friday.

Stony Brook Exchange is located in Building P-808, extension 6481. The hours of operation are 0930-1800 Monday through Friday.

For the convenience of Westover personnel a check cashing facility is available at the Main Exchange.

Exchange Office

The Exchange Office is located in Building 2322. The hours of operation are 0745-1645 Monday through Friday.

Base Cafeteria and Snack Bars

There are five Snack Bars located throughout the Base.

One branch is located in the Service Club, building 5550, extension 3841. The hours of operation are 0645-2200 Monday through Friday and 0900-2200 on Saturday and Sunday.

The cafeteria at Base Operations, Building 7090, extension 2540, is open seven days a week, 24 hours a day.

Service Station

A well-equipped Service Station is located beyond the main rotary in building 1601, extension 3203. The Service Station is a member of the AAA. The station is open from 0730-1800 Monday through Friday, 0800-1500 on Saturday, and 1000-1400 on Sunday.

Shoe Repair

The Base Shoe Repair Shop is located near the Base Library in building 2614 and is open for all types of shoe repair work from 0930-1730 Monday through Friday and 1000-1500 on Saturday.

Watch Repair Shop

A watch repair shop is located in the same building as the beauty shop, building 2301, extension 2908. This facility offers watch repairing, key making, plastic name plates, engraving, and plastic laminating. The hours of operation are 0845-1645 Monday through Friday.

Optical Shop

The Optical Shop is located in Building 2614, extension 3301. The base exchange optician is open from 0930-1730 Monday through Friday and from 1000 to 1500 on Saturday.

**"MAN'S FLIGHT THROUGH LIFE
IS SUSTAINED BY THE POWER
OF HIS KNOWLEDGE"**

Education Services

An important factor in the military career of each individual is that of bettering one's education for the purpose of advancing in his particular field.

In the military service every opportunity is made available to personnel who desire to take advantage of educational benefits from a small scale to an extensive study program.

The Base Education Office is prepared to assist Westover AFB personnel in any and all matters involving education from the reviewing of basic arithmetic to completing a college degree.

The scope of educational opportunities offered and assistance given includes the following.

Opportunity for learning is provided through USAFI correspondence and group study classes. Included under this program are courses in vocational-technical fields.

A large variety of both technical and academic subjects from elementary through college sophomore level are also included.

One initial enrollment fee entitles military personnel on active duty to enroll in any course in which they are interested and for which they are qualified to do the work. The original fee allows a student to complete the series of courses without additional charge, contingent upon successful completion of each successive course.

Courses designed to increase knowledge and improve skills within specific AFSCs and to develop greater proficiency among airmen and officers are offered through ECI correspondence.

Under "Operation Bootstrap", Air Force personnel through individual initiative may complete requirements for a college degree. A student may complete work leading to a degree by attending full-time classes at the college of his choice under the six-months TDY provisions of "Bootstrap."

The Education Office arranges off-duty classes at both off-base and on-base schools in a variety of subjects on the basis of demand. Beginning dates are announced in the base newspaper and on bulletin boards.

A testing service is also maintained through which



Educational opportunities at Westover are open to everyone and interested personnel will find the choice of studies almost unlimited.

military personnel may apply for and be administered a variety of tests including the high school GED and college CCT tests. A counseling service is available to help develop and plan a continuing program. High School diplomas may be obtained by completing procedures outlined by the Educational counselor.

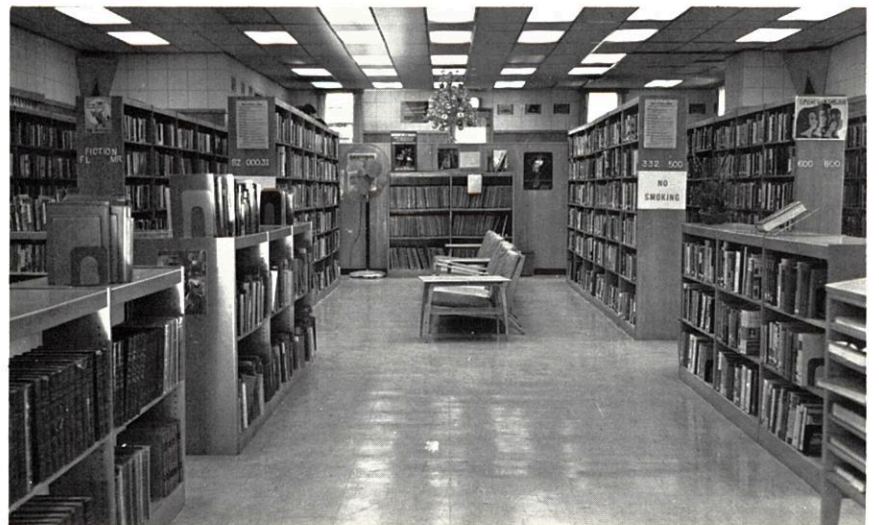
Counseling is also given those requiring additional credits for completing high school or college.

Library

The Base Library located in building 2610 across from the Main Exchange offers a wealth of recreational, reference and reading material for both adults and juveniles.

There are 33,000 volumes and a wide variety of periodicals and newspapers. There is also an excellent selection of records which may be borrowed.

The library is open weekdays, Monday through Thursday, from 1100 to 2100 hours; Friday and Saturday, 1100 1800 hours, and Sunday and Holidays, from 1400 to 2100.



The Base Library is kept current by constant addition of new volumes.



Memorial Chapel

CHAPEL ACTIVITIES

Protestant

Sunday Worship Services, Chapel 2	0945-1115
Memorial Chapel	1100
Junior Church, Memorial Chapel Annex	1100
Sunday School	0945
Age 3 thru 2nd Grade, Bowie Memorial School	
3rd Grade thru 6th grade, Selser Memorial School	
7th grade thru Adults, Sweeney Memorial School	
Protestant Youth of the Chapel:	
Junior, 7th and 8th grade,	
Memorial Chapel Annex	1800
Senior, 9th thru 12th grade,	
Memorial Chapel Annex	1800
Protestant Men of the Chapel, Luncheon Meeting,	
3rd Wednesday	1200
Protestant Women of the Chapel, 4th Thursday,	
Memorial Chapel	0930
Choir Rehearsals:	
Junior Choir, Memorial Chapel, Wednesday	1500
Jr. & Sr. High Choirs, Chapel 2 as scheduled	
Adult Choir, Memorial Chapel, Thursday	1900
DENOMINATIONAL Lutheran, Chapel 2 (1st Sun.) ..	0830
Christian Science, Chapel 2 (Tues.)	1930

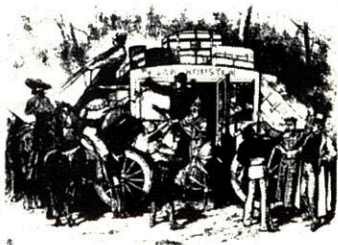
Catholic

Sunday Masses, Memorial Chapel	0815, 0930, 1230
Chapel 1	0930, 1045, 1200, 1800
Daily Masses, Chapel 1 Mon. thru Fri.	1200
Saturday Masses, Chapel 1	1000
Daily Confessions 15 minutes before Mass	
Saturday Confessions, Chapel 1,	1630-1730 & 1930-2030
Baptisms, Chapel 1 (Appointments Call 3573) Sat	1530
School of Religion, Bowie and Selser Schools	
(Sept thru June) Sunday	0800
Adult Information Class (Call Ext. 3573)	
Catholic Women's Group (1st Fri.)	0930
Knights of the Altar (Call Ext. 3573)	

Jewish

Sabbath Services, Memorial Chapel, Fri.	2000
Congregation M'Giney Shalom Sisterhood,	
Memorial Chapel Annex, 2nd Wed.	2000
Adult Education (For location call Ext. 2015)	
Tuesday	2000

Are you holding up the U.S. Mail?



It happens every day!

People hold up mail service for themselves and for everyone else by not using Zip Code on their mail.

Their mail has to be sorted and re-sorted several times along its route. A single unzipped letter can slow up the mail at 6 post offices!

But when your letter has Zip Code, postal workers can sort it faster and send it more directly to its destination.

They can also use modern electronic machines that "read" Zip numbers and sort mail fifteen times faster than was possible before.

So remember:

1. Always add Zip Code to every address you write to. If you don't know the number, call your post office or look it up in their Zip Code Directory. Local Zips can be found on the Zip Map in the business pages of your phone book.
2. Add Zip Code to your return address, too. That makes it easy for others to Zip their mail to you.

The post office must handle over 200 million new pieces of mail a day. Don't hold it up. Use Zip Code!

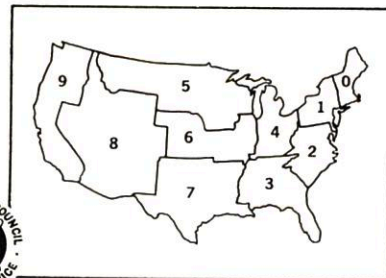
Mail moves the country—

ZIP CODE moves the mail!

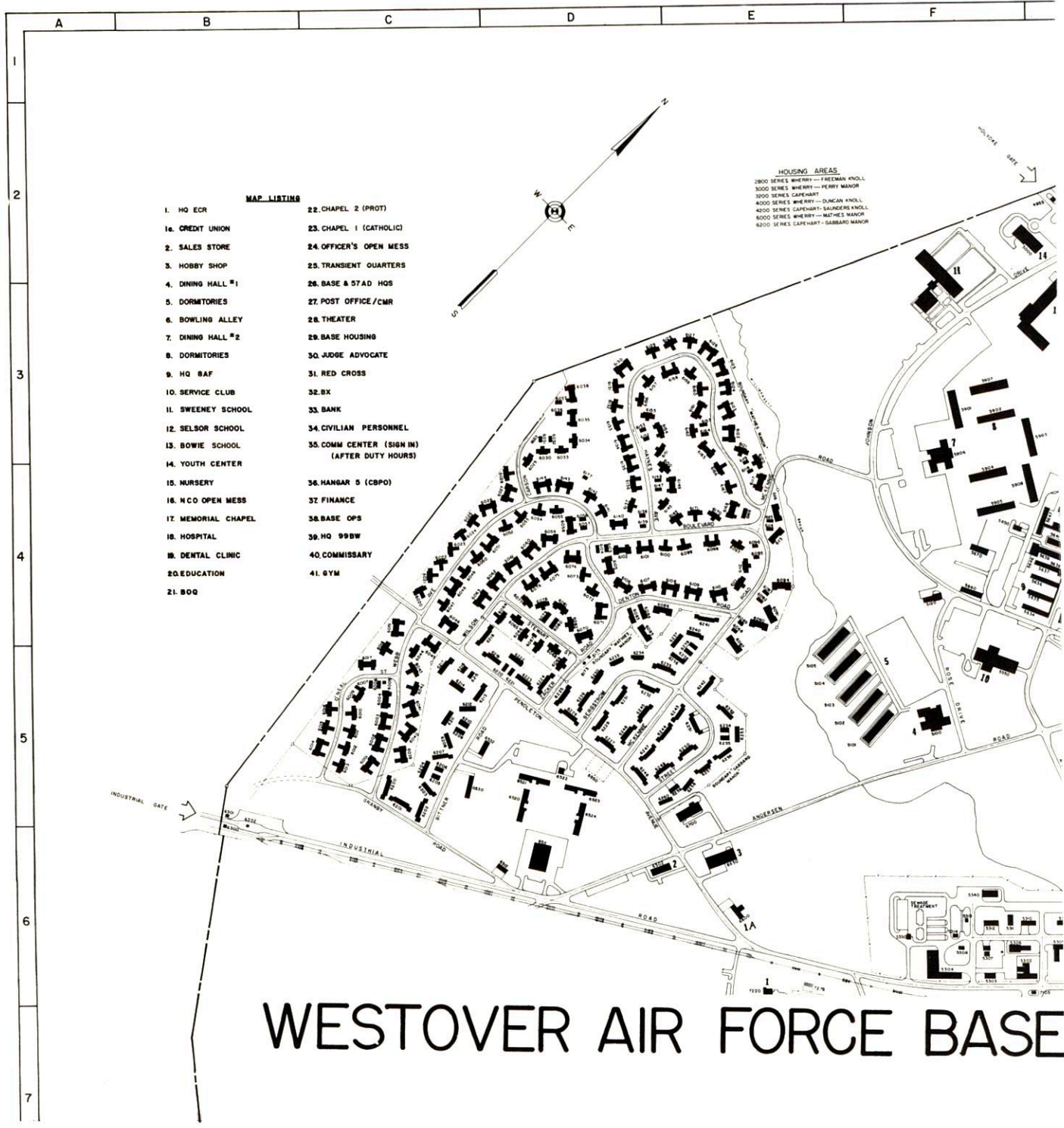


HOW ZIP CODE WORKS

Suppose the Zip Code is 60635. The "6" says it goes to the Midwest. The "06" narrows it down to Chicago. The last two digits—"35"—pinpoint the local post office. This eliminates many handling procedures. The letter is sorted faster, and sent more directly to its destination.



Published as a public service in cooperation with The Advertising Council



- MAP LISTING**
- | | |
|---------------------|---|
| 1. HQ ECR | 22. CHAPEL 2 (PROT) |
| 16. CREDIT UNION | 23. CHAPEL 1 (CATHOLIC) |
| 2. SALES STORE | 24. OFFICER'S OPEN MESS |
| 3. HOBBY SHOP | 25. TRANSIENT QUARTERS |
| 4. DINING HALL #1 | 26. BASE & STAD HOS |
| 5. DORMITORIES | 27. POST OFFICE/CMR |
| 6. BOWLING ALLEY | 28. THEATER |
| 7. DINING HALL #2 | 29. BASE HOUSING |
| 8. DORMITORIES | 30. JUDGE ADVOCATE |
| 9. HQ RAF | 31. RED CROSS |
| 10. SERVICE CLUB | 32. BX |
| 11. SWEENEY SCHOOL | 33. BANK |
| 12. SELSOR SCHOOL | 34. CIVILIAN PERSONNEL |
| 13. BOWIE SCHOOL | 35. COMM CENTER (SIGN IN)
(AFTER DUTY HOURS) |
| 14. YOUTH CENTER | 36. HANGAR 5 (CBPO) |
| 15. NURSERY | 37. FINANCE |
| 16. NCO OPEN MESS | 38. BASE OPS |
| 17. MEMORIAL CHAPEL | 39. HQ 99BW |
| 18. HOSPITAL | 40. COMMISSARY |
| 19. DENTAL CLINIC | 41. GYM |
| 20. EDUCATION | |
| 21. BOQ | |

WESTOVER AIR FORCE BASE





Bradford R. Collins, Realtors



SERVING WESTOVER PERSONNEL FROM SEVEN LOCATIONS

★ OVER 400 NEW MODERN FURNISHED APARTMENTS ★

★ ★ OVER 1000 PHOTO LISTINGS AVAILABLE AT ALL TIMES ★ ★

1751 WESTOVER ROAD
Chicopee Falls
Outside Ind. Gate
LY 3-9956

49 ELM ST. (Rt. 5A)
West Springfield
RE 4-8269

1140 SPRINGFIELD ST.
Agawam
RE 2-3154

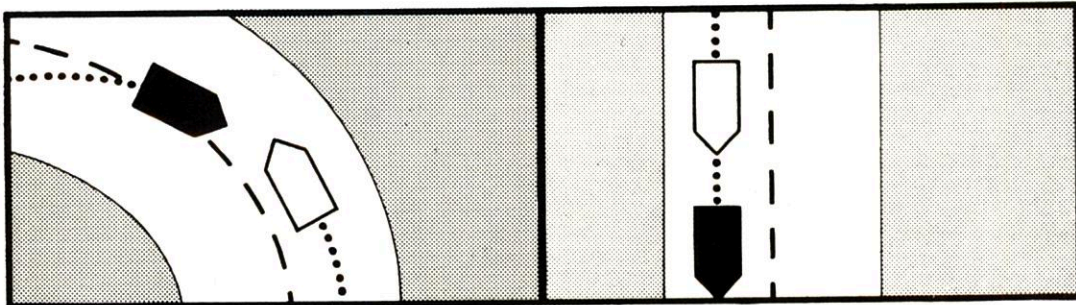
BRADFORD DRIVE
West Springfield
734-4954

COLLEGE HIGHWAY
Southwick
569-5387

1060 WILBRAHAM ROAD
Springfield
783-2107

WATCH OUT FOR THE OTHER GUY

Drive Defensively!



Never argue with a roadhog! Slow down. Warn him off with your horn or lights. And leave yourself an out. Never put yourself

at the mercy of another driver by following him too close. Protect yourself! Stay back one car length for every 10 mph of speed.



Published to save lives in cooperation with The Advertising Council and the National Safety Council.



DANTE'S INFERNO

Steaks

Distinct Fire-Steaks

Portions
for Children 85¢

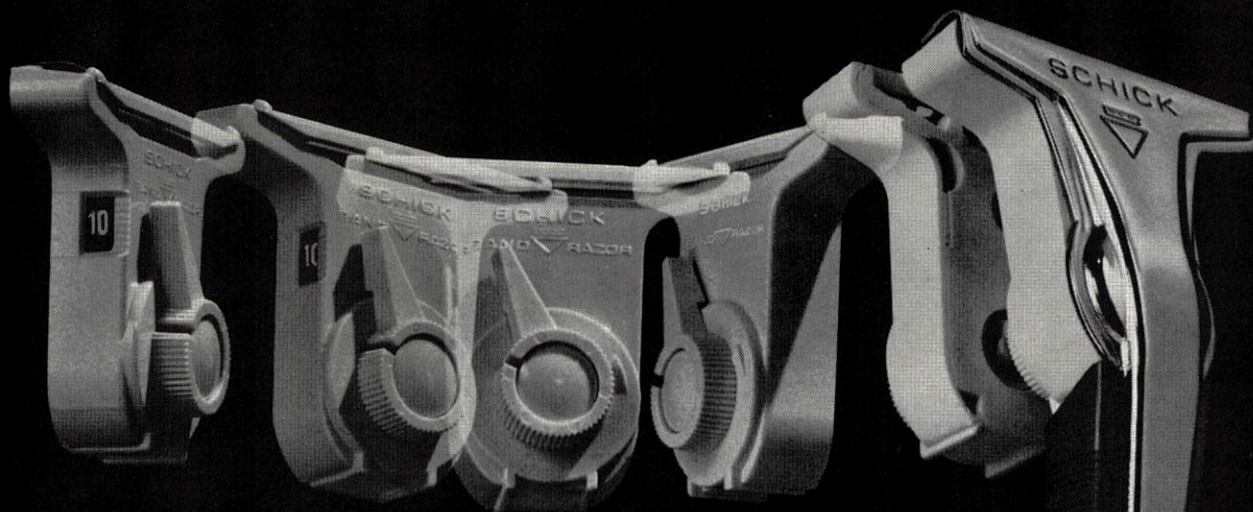
Sirloin Steak
Baked Potato
Salad Bowl, Choice of Dressings
Toasted French Roll

85

1068 RIVERDALE RD., ROUTE 5 WEST SPRINGFIELD, MASS. STEAKS 1-0234

End of the Blues:

Other Band Razors should have their heads examined – you'll find they're not all there!




The action's in the new Schick® 10-edge cartridge – with not just 6, but 10 new Krona Edges.

⚡ To keep your mornings bright and cheerful, Schick gives you a complete winding mechanism – new with every cartridge. While our competitor may think it's cheaper to put half the band mechanism in the razor and half in the cartridge, old and new parts do not always fit together. In fact the self-contained Schick cartridge fits all band razors.



⚡ Finally, the 10 Super Stainless Edges are held taut by an exclusive slotted band for positive shaving control. Every Krona® Edge has the incredibly smooth Miron® Coating for a surface of unequalled comfort.

Schick **AUTO-BAND®** **Razor**
Put your reliance on famous Schick Science.

Schick Safety Razor Company, Division of EVERHARP, Inc. 

Getting Here and There

Airlines

Bradley Field, located in Windsor Locks, Conn., is the major commercial airport serving the Springfield area. The major airlines are: American Airlines, Allegheny Airlines, Eastern Airlines, Mohawk Airlines, Trans-World Airlines, and United Airlines.

Base Bus Service

The Base Motor Pool operates a shuttle bus system from 0600 to 0028. These buses operate on a 15-minute schedule. Bus stops are located near all facilities, i.e., Hospital, BX, Service Club, etc.

Bus Lines

There are four major bus lines serving the Springfield area. The Greyhound Bus Depot is located at 50 Worthington St., Springfield, and information on the schedules may be obtained at RE 6-8831.

The Interstate Bus Corp. operates their schedule bus

runs through upper New York State, and the New England area. The Interstate Bus Terminal is located at 137 Bridge St., Springfield, and information may be obtained at RE 9-3826.

Direct connection for Boston and other New England areas is scheduled at the Peter Pan Bus Line located at 144 Bridge St., Springfield. Information and reservations may be obtained at RE 2-3173.

Buses to New York, Washington and points south, and Lowell, Hampton Beach, Portland and points north, are available at the Trailways Bus System, located at 137 Bridge St., Springfield. The phone number is RE 9-3826.

Railroads

There are three railroad companies serving the Springfield area. They are the Boston and Albany Railroad, the Boston & Maine Railroad and the New Haven Railroad, all of which are located at the Union Station in Springfield. Information and reservations may be obtained for the three railroads at RE 4-7341.

WESTOVER BUS SCHEDULE

HOLYOKE CITY HALL TO WESTOVER

- * 6:15 AM Buses Leave City Hall
- * 6:45 Then Via Dwight St. Race,
- * 7:10 Mosher, Ely, No. Bridge St.
- * 8:10 Over County Bridge, Main
- * 8:40 St. So. Hadley Falls, Ludlow
- * 9:30 Rd. Montcalm St. Britton to
- *10:30 Westover Field, then via
- *11:30 Central Ave. Inner Dr.
- 12:40 PM First Ave. Collins, Third
- 1:55 Ave. Austin Rd. Anderson
- 3:10 Ave. out Industrial Gate
- 4:25 to Chicopee Falls.
- 5:40

WESTOVER TO HOLYOKE CITY HALL

- * 6:20 AM Buses leave from PX on
- * 7:00 Collins St. via Collins St.
- * 7:25 First Ave. Inner Drive,
- * 8:00 Central Ave. out Fairview
- * 8:40 Gate, to So. Hadley Falls,
- * 9:10 over County Bridge to
- * 9:25 Holyoke via No. Bridge, Ely St.
- * 9:50 Mosher, Main, Appleton St. to
- *10:50 City Hall.
- *11:50
- 1:25 PM
- 2:40
- 3:55
- 5:10
- 6:25

WESTOVER TO CHICOPEE FALLS

- * 6:25 AM Buses leave from the
- * 6:55 Holyoke Gate, via Central
- * 7:25 Ave. Inner Drive, First

- * 8:25 Ave. Collins St. Third
- * 8:55 Ave. Austin Rd, Anderson
- * 9:45 Rd. Industrial Ave. out
- *10:45 Industrial Gate, Westover
- *11:45 Rd. Granby Rd. Montgomery
- 12:55 PM St. over Chicopee Falls
- 2:10 Bridge, Main St. Church St
- 3:25
- 4:40
- 5:55

CHICOPEE FALLS TO WESTOVER FIELD

- * 6:10 AM Buses leave Falls Inn, via
- * 6:45 Church St Grove St Main
- * 7:15 over Chicopee Falls Bridge
- * 7:45 Montgomery St. Granby Rd.
- * 8:30 Westover Rd. Industrial Gate
- * 8:55 then via Industrial Ave.
- * 9:25 Anderson Rd. Austin Rd.
- *10:30 Third Ave. Collins St. First
- *11:30 Ave. Inner Drive, Central Ave.
- 1:15 PM Out Fairview Gate thru S.H.
- 2:30 Falls, over County Bridge,
- 3:45 Ely St. Mosher, Main, via
- 5:00 Appleton St. to City Hall.
- 6:15

*—Does not run on Saturdays.
No service Sundays or holidays.

FARE INFORMATION:

Holyoke to Westover—30c cash.
Chicopee Falls to Westover Field—30c cash.
Passengers may ride between any point in Westover Field to any other point in Westover Field for 20c cash.
Passengers will be picked up or discharged at any point along the route in Westover Field.

EMERGENCY PHONE NUMBERS

Aircraft Accident	2222
Fire (Report fire only)	1117
Ambulance	7367
Hospital Emergency	7260
Security Police Emergency	3000
Central Security Control	3777
Officer of the Day (Base)	3444
Officer of the Day (8th AF)	3922
American Red Cross (Duty hours)	3814
(Non-duty hours)	"0"
Chaplain(Duty hours)	2015
(Non-duty hours)	3444
Civil Engineer Emergency Desk	2751
Information from on base	1113
From off base	577-1110
Explosive Ordnance Disposal	6660



Aerial view of Lynch Lumber Company of West Springfield.

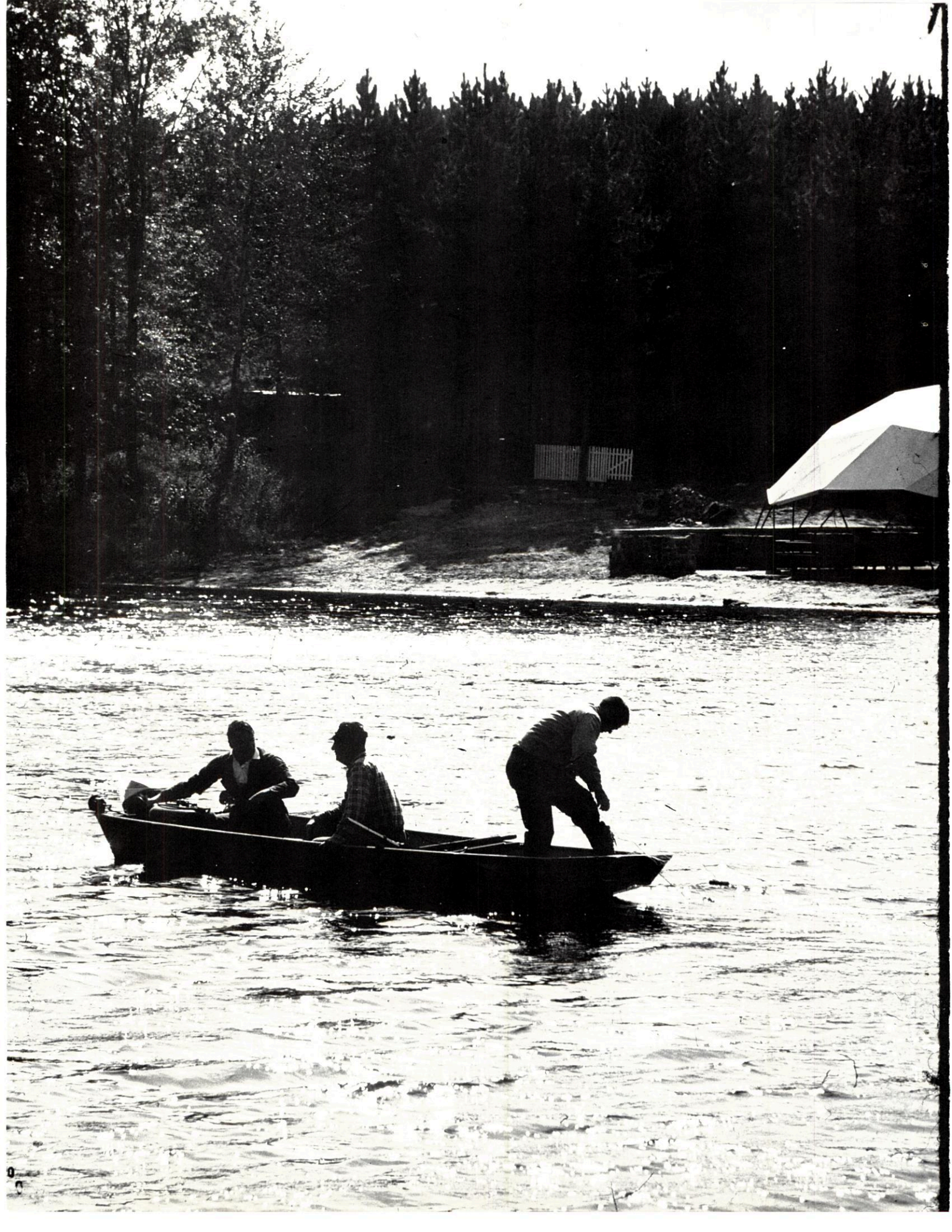
(Advertisement)

Welcome to
Massachusetts



OLD STURBRIDGE CHURCH
(Photo Courtesy Massachusetts Dept. of Commerce)







The magnificent gold-domed capitol of Massachusetts on Beacon Hill overlooking the Boston Common and Public Garden.

Our Neighbors in the Pioneer Valley

SPRINGFIELD - CHICOPEE - HOLYOKE

An 1878 New England remedy for headaches was "two teaspoonfuls of powdered charcoal taken in a tumbler of hot water." Recommended by many in 1958 as a good cure for the headaches of urban living is a trip through Massachusetts' tranquil Pioneer Valley.

Here, two hours from Boston and three from New York, are 2,500 square miles of peaceful meadows, checkered farmlands and picture book villages looking small and white against the Berkshire Hills, the Holyoke Range and Mt. Tom.

Newcomers to Westover will find a wealth of activities and interesting points in the several large and small near-by cities. Largest of all is Springfield. Springfield is one of the oldest, yet one of the most modern cities in the United States. Located on the Connecticut River, it was established as a trading post by William Pynchon of Springfield, England, in 1636, only 16 years after the Pilgrims landed on Plymouth Rock. Today, Springfield is the third largest city in Massachusetts with more than 166,000 people and more than 300 industries making their homes in the 32 square miles covered by the city.

Noted for its diversified industries, this has been an industrial area for more than 300 years. The principal

industries are: small arms and accessories; commercial and private insurance; paper and paper products; printing and publishing; fabricated metal products; primary metal products, electrical machinery; textiles; food processing; apparel; chemicals; leather products; machine tools; transportation equipment; rubber products; and electrical appliances.

The Springfield (U.S.) Armory, on a rise commanding the city and river, was built in 1795 on a site selected by George Washington in 1789, when Congress authorized the construction of the nation's first gun factory. Not only were a great many guns manufactured here during the Civil War, but the Armory, until recently was the principal maker of small arms for the U.S. Army. The products included the famous Springfield and Garand rifles, which have given Springfield the title of "Rifle City."

Springfield has the distinction of having been the birthplace of the game of basketball. It was invented in 1891 by James Naismith, then an instructor at the International YMCA College, now known as Springfield College.

Holyoke, population some 54,000 is located five miles from Westover. Known as a "city in the country," it is unique in that it was the first planned industrial city in



ABOVE: Minuteman Statue guards the approach to Concord Bridge. BELOW: Mt. Tom Ski area.

